

Why Use Nitric Oxide Testing?

The recently released *Expert Panel Report 3: Guidelines for the Diagnosis and Management of Asthma (EPR-3)*, states asthma affects 22 million Americans and results in almost 500,000 hospitalizations every year. On a global basis the numbers are just as staggering.

Exhaled nitric oxide (eNO) testing has shown to be an effective marker of airway inflammation, which is the main pathogenic factor in asthma. Nitric oxide is produced when airways become inflamed, causing increased levels in eNO compared with patients without asthma. Nitric Oxide testing is non-invasive, easy to perform and offers quick and immediate results. Additionally, when used in conjunction with other Pulmonary Function Tests, Sponsors are able to measure both hyper-responsiveness (Spirometry or Challenge Testing) as well as airway inflammation.



Aerocrine NIOX5
Chemiluminescence Analyzer
510k and CE Mark
Removes ambient NO
3 Effort Test Session
14 Day Calibration

Biomedical Systems' Proven Centralized Approach

When you trust a study to Biomedical Systems, you can be sure that our experienced team of Project Managers and Respiratory Therapists will work with you every step of the way to make your study smooth and seamless. In addition to excellent and professional customer service, your study will receive:

- Protocol-specific training manuals that clarify procedures for site personnel
- Standardized equipment
- SOPs and comprehensive quality control for accurate, reliable data
- RRT review of flow loops per ATS/ERS guidelines
- Manual and electronic quality control checks

Global Capabilities

- Participating in trials in over 75 countries, 11,000 clinical sites
- Offices in North America, Europe & Asia
- Multilingual staff fluent in 20 languages to facilitate communication with sites
- Phase I through Phase IV studies
- Single Project Manager assigned per study
- Web-based Sponsor access to data and reports



Biomedical Systems Nitric Oxide Testing

Sample Site Report

Patient Information

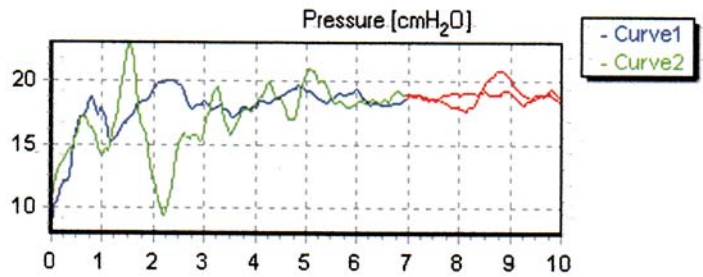
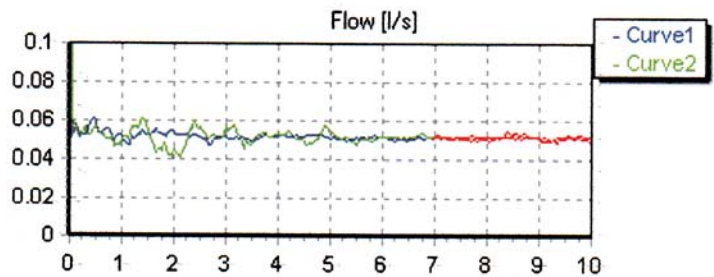
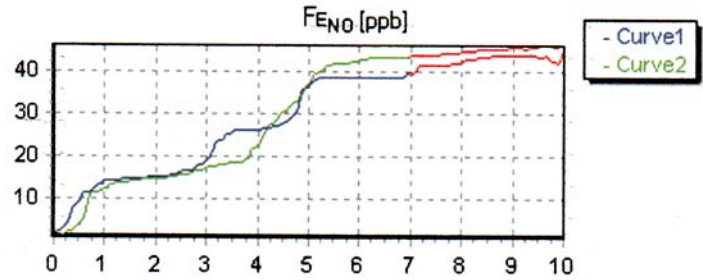
Name: cp
Patient ID: 10
Time Stamp: 2007-12-12 14:31

Measurements

$F_{E_{NO}}$ average [ppb]: 43.9
 \dot{V}_{NO} average [nl/min]: 135.0
1 [ppb]: 42.7
2 [ppb]: 45.0

Patient Data

Sex: Male
Project: Demo Study
Birth Date [yyyy-mm-dd]:
Height [cm]: 0
Deadspace Volume [ml]: 0
Visit (1,2,3,4,5,6):
Interval (Pre):
Smoker (y/n):
Time since meal (h):
Active infection (y/n):



For more information or to schedule a presentation, please contact a Biomedical Systems' Representative at 800-877-6334 in North America or 32-2-661-20-70 in Europe. Or access our website at www.biomedsys.com.



www.biomedsys.com

European Headquarters
Biomedical Systems SA/NV
Waversesteenweg 1945
Chaussée de Wavre
B-1160 Brussels, Belgium
T: +32 (0) 2 661 20 70
F: +32 (0) 2 661 20 71

Corporate Headquarters
Biomedical Systems
77 Progress Parkway
Building One
St. Louis, Missouri 63043
T: 1.800.877.6334
T: 1.314.576.6800

Japanese Service Office
Ibaraki-ken Tsukuba-shi
Kenkyugakuen C49-2
Tsukuba Cityia Moi Bldg. Room 103
305-0817 Japan
T: +81.29.886.7221
F: +81.29.886.7222