

Centralized Holter

b i o m e d i c a l s y s t e m s

Experienced In Holter Since 1975

Many Sponsors use Holter Monitoring to capture every heartbeat over a 24 or 48 hour time period for a more comprehensive picture of cardiac activity. When you select Biomedical Systems' Centralized Holter service, you partner with a global company that has acquired and analyzed over 2 million Holter recordings since 1975.

Biomedical Systems offers several equipment options to acquire Holter data for clinical trials.



- "True" 12-Lead Digital Holter - The digital 12-Lead Holter will allow the Sponsor to acquire up to 48 hours of continuous true 12-Lead ECG data. The digital 12-Lead gives the Sponsors the option to analyze all the data available or they may pick and choose protocol specific ECG timepoints.
- Standard 5 or 7 Lead Digital Holter - Volunteers wear a small, lightweight digital Holter recorder for a 6, 12, 24 or 48 hour time period. Data is continuously written to a flashcard which captures every heartbeat during that time period. The flashcard can be removed at the site, inserted into a flashcard reader and then digitally transmitted to a Biomedical Systems office in the United States or Europe. The flashcard may also be shipped by courier to one of our facilities.

Biomedical Systems' Proven Centralized Approach

At the onset of a clinical trial, Biomedical Systems' centralized approach encompasses:

- Standardized Holter recorders, accessories and disposable supplies
- Training for site personnel conducted on-site, at investigator meeting or by teleconference
- Protocol specific training manuals and quick guides
- 24/7 technical support throughout the trial

By minimizing as many of the variables as possible, Biomedical Systems allows the data acquisition process to be efficient, cost-effective and accurate.



Global Capabilities

- Participating in trials in over 75 countries, 11,000 clinical sites
- Offices in North America, Europe & Asia
- Multilingual staff fluent in 20 languages to facilitate communication with sites
- Phase I through Phase IV studies
- Single Project Manager assigned per study
- Web-based Sponsor access to data and reports

Holter

Biomedical Systems' Holter Analysis Systems

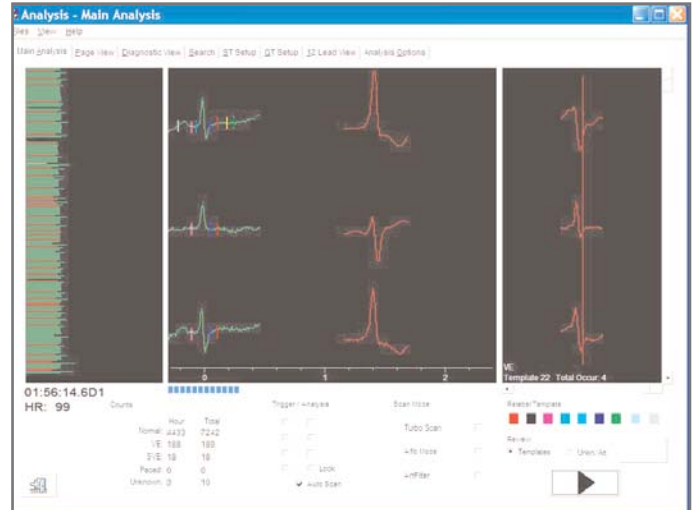
Biomedical Systems' team of engineers developed a Holter Analysis System that has full-featured tools available during prospective analysis, in addition to the standard template editing and validation tools found in retrospective systems. This allows our Cardiac Technicians to produce the most accurate reports possible in the least amount of time. Additional analysis tools are available for QT interval, event-based enhanced ST and Spectral HRV. Biomedical Systems can produce detailed reports for Sponsor review via hard copy or web based access.

Our Holter Analysis Systems Scan Profile Features:

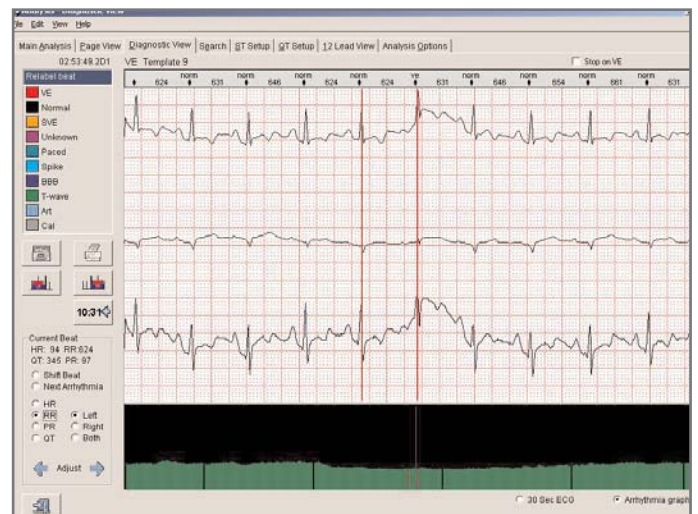
- Bradycardia and tachycardia rate thresholds
- ST thresholds
- SVE prematurity rates
- SVT rate thresholds
- Pace rates
- P-wave analysis thresholds

Prospective Analysis Features:

- In-process template review and editing
- In-process ECG review with:
 - Diagnostic Strip view with strip save
 - Page Review
 - Search by time or arrhythmia
 - Full Beat-level editing and insertion
 - Block relabeling of beats



Superimposition Screen for the Century Holter Analysis System



For more information or to schedule a presentation, please contact a Biomedical Systems' Representative at 800-877-6334 in North America or 32-2-661-20-70 in Europe. Or access our website at www.biomedsys.com.



European Headquarters
Biomedical Systems SA/NV
Waversesteenweg 1945
Chaussée de Wavre
B-1160 Brussels, Belgium
T: +32 (0) 2 661 20 70
F: +32 (0) 2 661 20 71

Corporate Headquarters
Biomedical Systems
77 Progress Parkway
Building One
St. Louis, Missouri 63043
T: 1.800.877.6334
T: 1.314.576.6800

Japanese Service Office
Ibaraki-ken Tsukuba-shi
Kenkyugakuen C49-2
Tsukuba Cityia Moi Bldg. Room 103
305-0817 Japan
T: +81.29.886.7221
F: +81.29.886.7222