

Centralized Echocardiography

b i o m e d i c a l s y s t e m s

Echocardiography In Clinical Trials

More and more, Sponsors are using echocardiography to examine the structural health of the heart in clinical trials. Echocardiography is a non-invasive test that will allow Sponsors to view the anatomy, structure and function of the heart including:

- Complete cardiac chamber dimension
- Cardiac wall thickness, left ventricular mass
- Segmental wall motion analysis
- Cardiac valvular structure, function and competency
- Cardiac chamber pressures and filling capacities
(All acquired and measured according to ASE guidelines)

Experts in Echocardiography

Due to the technical and sophisticated nature of the test, it is extremely important to work with a vendor that has expertise in echocardiography. With Biomedical Systems, you'll work with one of our Board Certified Cardiologists Level



III Echocardiographer who can assist or completely design your protocol to meet specific Sponsor and FDA requirements. Sites also receive protocol specific training at investigator meetings, teleconferences or videoconferences by the cardiologist or Registered Diagnostic Cardiac Sonographer designated to your study.

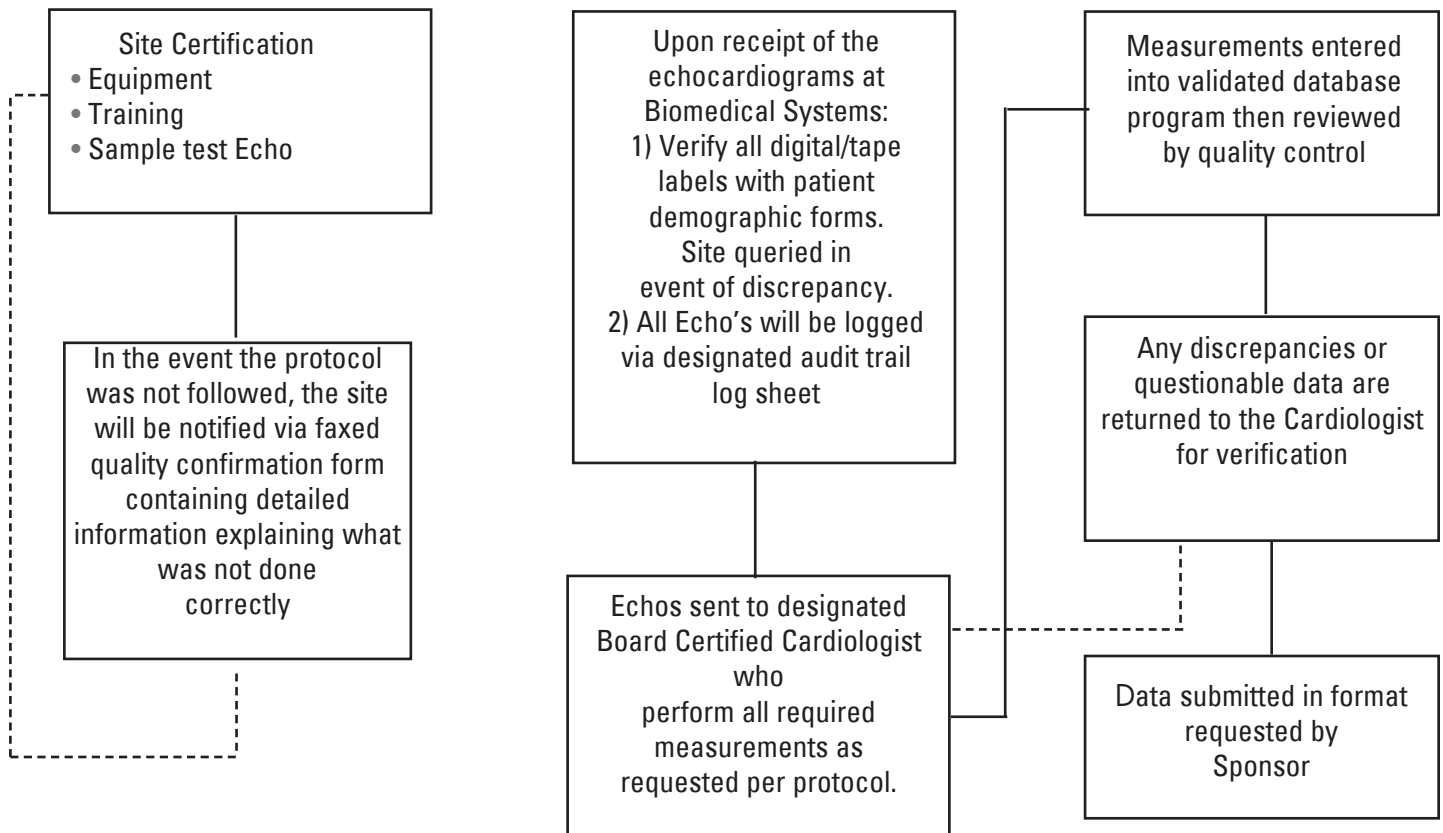
The Biomedical Systems' Advantage

Biomedical Systems Echocardiography team is skilled in 2D, M-Mode, Contrast Agents and Doppler. Several of the advantages with working with Biomedical Systems include:

- Site certification for quality of echocardiograms ensures protocol is followed by site personnel.
- Registered Diagnostic Cardiac Sonographer ensures equipment has the required capabilities. Test echocardiogram is submitted before the study start with site notification via quality report form within 48 hours of receipt at BMS.
- Quality of echocardiograms monitored continuous throughout the trial.
- Analysis includes, but not limited to, ejection fraction, left ventricular function, left ventricular mass and valvular assessment.
- Specific Doppler measurements required to evaluate left ventricular diastolic function. Increased sensitivity of specific protocols designed by Biomedical Systems permits early detection of diastolic dysfunction/heart failure before overt changes in ejection fraction are seen.
- Technical site support provided by a Registered Diagnostic Cardiac Sonographer.
- Analysis performed on validated 21CFR Part 11 compliant system.
- Secure remote access reading system available to Cardiologist to ensure protocol TAT are met.

Echocardiography

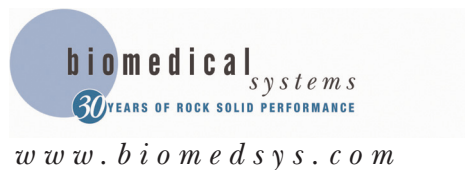
Biomedical Systems' Echocardiography Workflow



Key Components To A Successful Study

- Communication between Biomedical Systems, the sites, and the Sponsor
- Clear understanding of the Echocardiography protocol by Sonographer/Physician doing test
- Trained personnel performing the test
- BMS assessment and approval of site equipment

For more information or to schedule a presentation, please contact a Biomedical Systems' Representative at 800-877-6334 in North America or 32-2-661-20-70 in Europe. Or access our website at www.biomedsys.com.



European Headquarters
Biomedical Systems SA/NV
Waversesteenweg 1945
Chaussée de Wavre
B-1160 Brussels, Belgium
T: +32 (0) 2 661 20 70
F: +32 (0) 2 661 20 71

Corporate Headquarters
Biomedical Systems
77 Progress Parkway
Building One
St. Louis, Missouri 63043
T: 1.800.877.6334
T: 1.314.576.6800

Japanese Service Office
Ibaraki-ken Tsukuba-shi
Kenkyugakuen C49-2
Tsukuba Cityia Moi Bldg. Room 103
305-0817 Japan
T: +81.29.886.7221
F: +81.29.886.7222