

Centralized Digital 12-Lead ECG

b i o m e d i c a l s y s t e m s

Rock Solid Since 1975



Over the past several years the ECG Core Lab industry has seen a great deal of consolidation; bankruptcies, buy-outs or companies simply closing their doors. With the time and resources dedicated to selecting an ECG vendor, Sponsors

should be able to trust that the company will be a viable, trusted partner for their clinical trials throughout the course of the agreement. Biomedical Systems has continued to maintain its position as a global leader in centralized diagnostic testing by investing in the things that are most important to Sponsors; well trained people, state-of-the-art equipment and systems, and the infrastructure to support worldwide global studies.

iPort ECG Management System

Good decision-making is based on good information, delivered in a timely fashion. With Biomedical



Systems' proprietary iPort ECG Management System, Sponsors enjoy real time access to their study cardiac test data. iPort is a secure, web-based portal that provides instant access to essential study information: ECGs (including a PDF of the site printout), Alerts, Metrics, Shipping and Financials. Data can be downloaded into an Excel spreadsheet and sorted to produce reports that meet Sponsors immediate needs. Finally a system that delivers the information when need and not when someone gets around to posting it.

Biomedical Systems' Digital ECG Advantage

Biomedical Systems has been working in a digital ECG environment since the very beginning. To date Biomedical Systems has participated in over 2,500 digital ECG trials. With our centralized digital approach Sponsors receive:

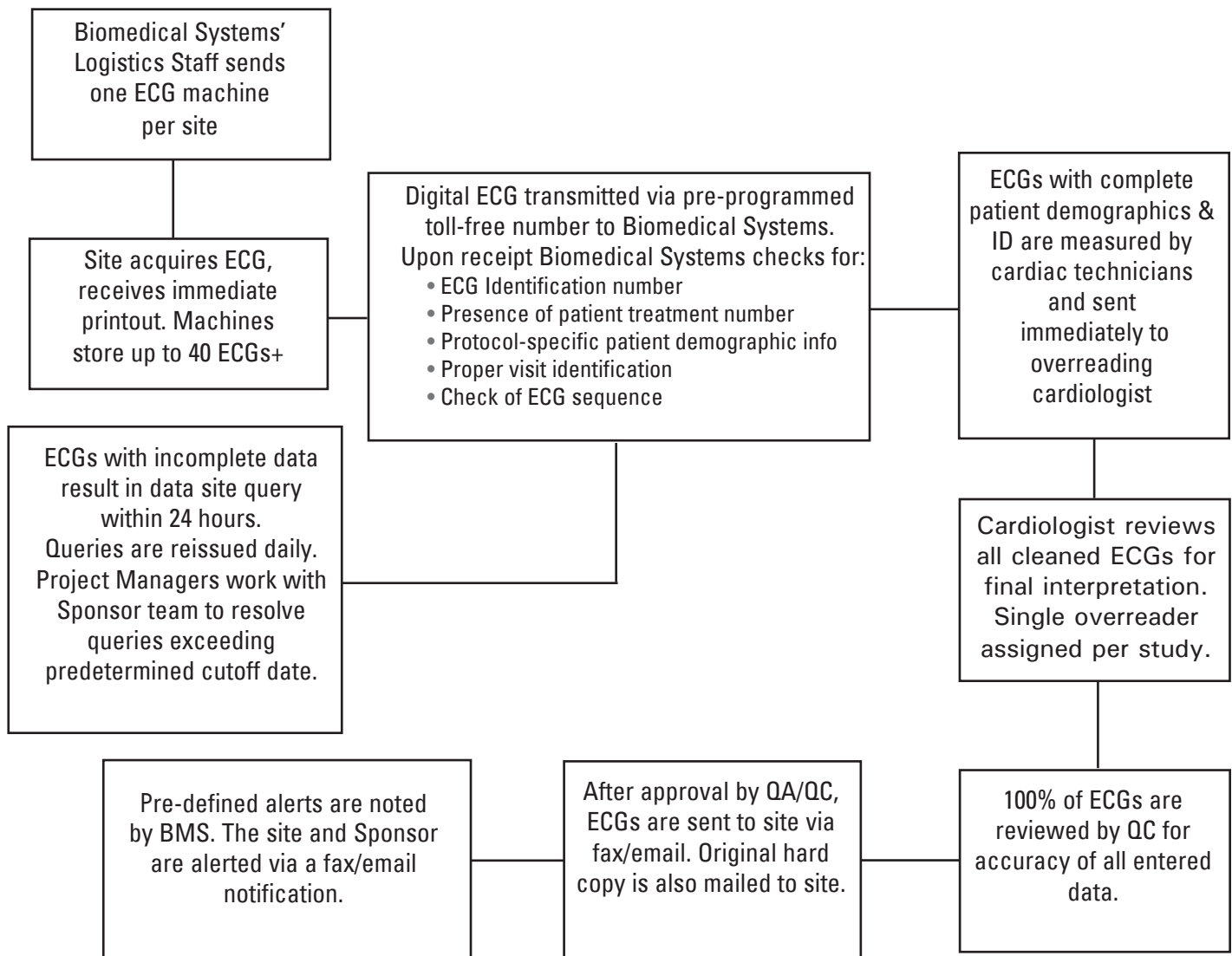
- Web-based Sponsor access to data and reports
- 21 CFR Part 11 compliance regarding electronic documents and electronic audit trails
- Cardiologists' annotations captured electronically on all ECG interval onsets and offsets
- Data verified and cleaned prior to electronic submission to Sponsors according to protocol
- Protocol specific metrics available to Sponsors
- Complete 10-second electronic digital raw ECG waveforms with electronic storage
- XML data submitted into the FDA ECG warehouse

Global Capabilities

- Participating in trials in over 75 countries, 11,000 clinical sites
- Offices in North America, Europe & Asia
- Multilingual staff fluent in 20 languages to facilitate communication with sites
- Phase I through Phase IV studies
- Single Project Manager assigned per study
- Web-based Sponsor access to data and reports

ECG

Biomedical Systems' ECG Workflow Process



For more information or to schedule a presentation, please contact a Biomedical Systems' Representative at 800-877-6334 in North America or 32-2-661-20-70 in Europe. Or access our website at www.biomedsys.com.



European Headquarters
Biomedical Systems SA/NV
Waversesteenweg 1945
Chaussée de Wavre
B-1160 Brussels, Belgium
T: +32 (0) 2 661 20 70
F: +32 (0) 2 661 20 71

Corporate Headquarters
Biomedical Systems
77 Progress Parkway
Building One
St. Louis, Missouri 63043
T: 1.800.877.6334
T: 1.314.576.6800

Japanese Service Office
Ibaraki-ken Tsukuba-shi
Kenkyugakuen C49-2
Tsukuba Cityia Moi Bldg. Room 103
305-0817 Japan
T: +81.29.886.7221
F: +81.29.886.7222