

Centralized DLCO

b i o m e d i c a l s y s t e m s

Clinical Trials and Centralized DLCO Testing

According to the American Thoracic Society (ATS), "Measuring an 'overall' CO uptake by single-breath technique has proved useful in assessing a variety of lung abnormalities that impair alveolar capillary gas transport. Moreover, in many diseases, the magnitude of abnormalities in DLCO has been shown to correlate with disease severity and with direct measurements of arterial blood oxygenation, especially during exercise."[†]

Centralized DLCO testing offers Sponsors the advantage of being able to diagnose and treat lung disorders not found by either spirometry or chest x-ray. When DLCO is used for clinical screening of patients with some types of lung disease, testing can demonstrate a significantly impaired gas exchange in many patients where no significant defect in mechanics of breathing (spirometry) were found. Many of these patients may also have a normal chest x-ray so that only reduced DLCO offers valid proof of lung disease.



In addition to centralizing data for DLCO, Biomedical Systems' Pulmonary Function Lab can centralize data for Sponsor studies that require Spirometry, Peak Flow, Nitric Oxide, Challenge Testing, Forced Oscillometry and Pulse Oximetry.

[†]American Thoracic Society, Single-breath Carbon Monoxide Diffusing Capacity (Transfer Factor) Recommendation for a Standard Technique

Biomedical Systems' Proven Centralized Approach

At the onset of a clinical trial, Biomedical Systems' centralized approach encompasses:

- Standardized DLCO simulator and software, accessories and disposable supplies
- Training for site personnel conducted on-site, at investigator meeting or by teleconference
- Protocol-specific training manuals and quick guides
- 24/7 technical support throughout the trial

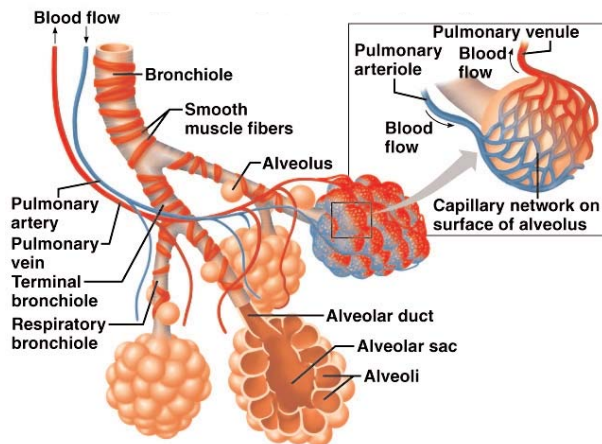
By minimizing as many of the variables as possible, Biomedical Systems allows the data acquisition process to be efficient, cost-effective and improve reproducibility.

Global Capabilities

- Participating in trials in over 75 countries, 11,000 clinical sites
- Offices in North America, Europe & Asia
- Multilingual staff fluent in 20 languages to facilitate communication with sites
- Phase I through Phase IV studies
- Single Project Manager assigned per study
- Web-based Sponsor access to data and reports



Biomedical Systems & Standardized DLCO Equipment



A measurement of the capability of gas exchange between the alveoli and blood stream using inhaled Carbon Monoxide

One of the primary goals for both the ATS and ERS is to standardize lung function tests to improve the reproducibility of the data and make the results more comparable from one laboratory to the next.

With Biomedical Systems Centralized DLCO services each lab will receive:

- DLCO Simulator
- DLCO Simulator Cart
- Calibration Gas
- Shipping Cases



For more information or to schedule a presentation, please contact a Biomedical Systems' Representative at 800-877-6334 in North America or 32-2-661-20-70 in Europe. Or access our website at www.biomedsys.com.



www.biomedsys.com

European Headquarters
Biomedical Systems SA/NV
Waversesteenweg 1945
Chaussée de Wavre
B-1160 Brussels, Belgium
T: +32 (0) 2 661 20 70
F: +32 (0) 2 661 20 71

Corporate Headquarters
Biomedical Systems
77 Progress Parkway
Building One
St. Louis, Missouri 63043
T: 1.800.877.6334
T: 1.314.576.6800

Japanese Service Office
Ibaraki-ken Tsukuba-shi
Kenkyugakuen C49-2
Tsukuba Cityia Moi Bldg. Room 103
305-0817 Japan
T: +81.29.886.7221
F: +81.29.886.7222